

WHAT'S HAPPENING AT HAWKINS PARK?

Through a grant from the **Gaylord and Dorothy Donnelley Foundation**, the **Kankakee County SWCD** and **Limestone Park District** are planting native wildflowers, shrubs, and trees to help benefit important pollinator species and beautify your park!

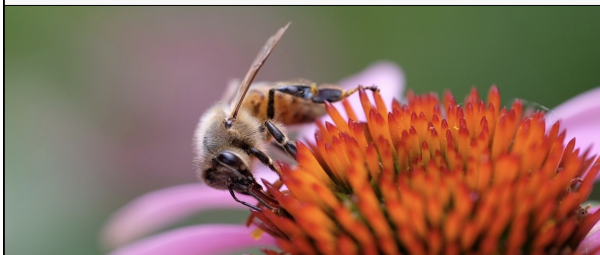
PRAIRIE WILDFLOWERS



TREES & SHRUBS



POLLINATOR RESEARCH



KANKAKEE COUNTY SWCD

*Showing the public a better way to
manage our natural resources.*



Kankakee County
Soil and Water
Conservation District



GAYLORD AND
DOROTHY DONNELLEY
FOUNDATION



Limestone Park District's **HAWKINS PARK**

NATIVE PLANTS & POLLINATORS PROJECT

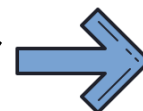
.....
www.kankakeecountyswcd.org
.....



Facebook.com/K3SWCD

Facebook.com/LimestoneParks
.....

Native Seed Inside!



NATIVE PLANTS & POLLINATORS

POLLINATION is the transfer of pollen from flower to flower, allowing fertilization to take place and a seed to form.

POLLINATORS visit flowers searching for food, transferring pollen from flower to flower along the way.



Midwest pollinators include bees, butterflies, moths, wasps, flies, beetles, and even birds!

One of the best ways to help our local pollinators is to plant native wildflowers, shrubs, and trees!



Nearly 90% of all flowering plants and 35% of the world's food crops depend upon pollinators to reproduce!

Imagine a world without pollinators. We wouldn't have the things below... like chocolate, coffee, pumpkins, apples, tomatoes, and much more!



TO LEARN MORE ABOUT POLLINATORS, VISIT xerces.org/pollinator-conservation

PLANT YOUR OWN WILDFLOWERS!

Broadcast Method—

Scatter your seed outside in a small, weed-free area in early fall, winter, or spring after a hard frost. Sowing seed immediately ahead of snowfall or rain will increase seed to soil contact.

Toilet Paper Roll Method—

My favorite way to plant native seed is by reusing plastic milk jugs and toilet paper rolls! It's an easy and fun project for the whole family.

Visit kankakeecountyswcd.org/projects for step-by-step planting instructions, seed packet contents, and flower photos!



If you plant your seed, tag us in your photos on social media! Or send us pics to feature on our website at Crystal.Sauder@il.nacdnet.net!



Thank you for "bee-ing" a friend to our pollinators!

HAWKINS PARK PROJECT

This year...



13 new native wildflower species were planted at the north end of Hawkins Park.



57 trees and shrubs (bur oak, white oak, red oak, redbud, and ninebark) were planted around the park perimeter.



Oak trees can live a few hundred years, thus providing benefits for perhaps 15+ generations of park visitors!



GET INVOLVED AT HAWKINS!

Would your family like to **plant a tree** at Hawkins Park?

To "reserve a tree" for our fall planting celebration, please email Crystal at Crystal.Sauder@il.nacdnet.net



FOLLOW US ON FACEBOOK FOR MORE ON HAWKINS & OTHER PROJECTS IN KANKAKEE COUNTY!

[Facebook.com/K3SWCD](https://www.facebook.com/K3SWCD)